

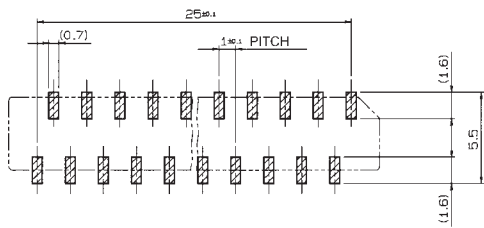
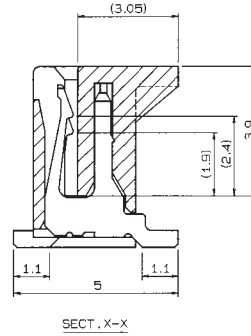
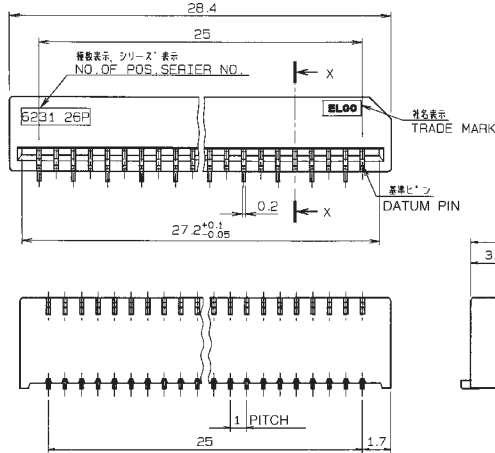
1.0mm Pitch

SERIES

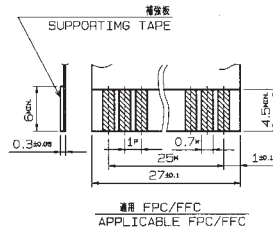
# 6231

1.0mmピッチ NON-ZIF ストレート SMT 片面接点

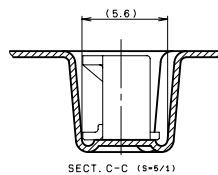
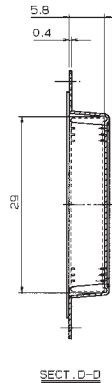
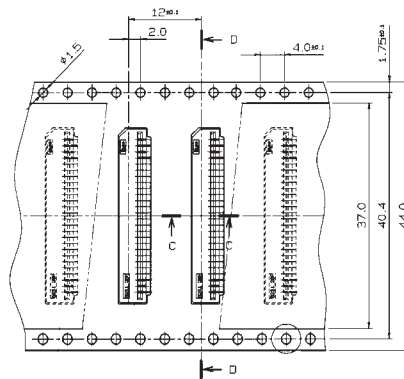
1.0mmPitch LIF Vertical SMT Single-sided contact



	公差 (TOLERANCE)		
	P	W	M
FPC	±0.02	+0.07 -0.05	±0.05
FFC	±0.05	±0.03	±0.1



基取付け寸法 (コネクタ搭載面側)  
MOUNTING LAYOUT (CONN. MOUNTING SIDE)



注文コード ORDERING CODE

04 6231 026 000 800 X

極数 NUMBER OF POSITIONS

800+ : スズ銅めっき Sn-Cu Plated (RoHS対応品 RoHS Compliant Product)  
800 : スズ鉛めっき Sn-Pb Plated

梱包数量 1000個/リール  
PACKING QUANTITY : 1000/Reel