

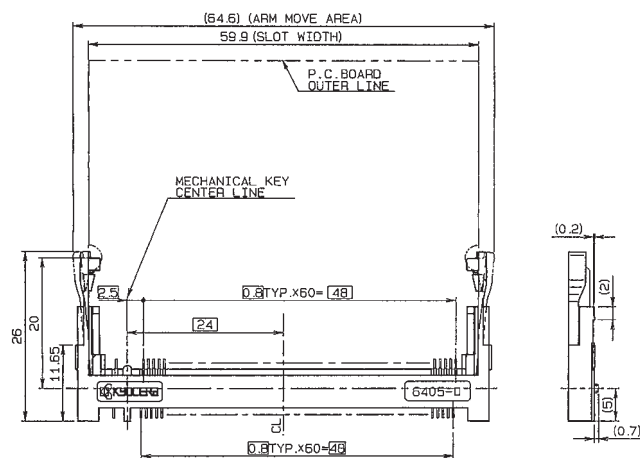
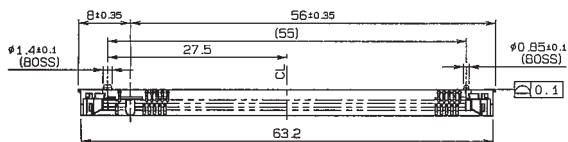
0.8mm Pitch

SERIES

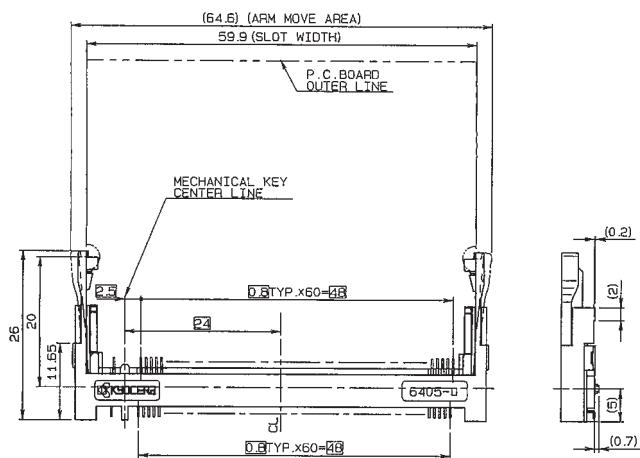
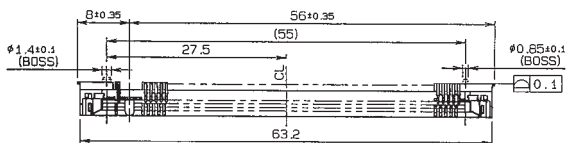
6405

ミニPCI タイプⅢ コネクタ (0.8mmピッチ)
Mini PCI Type III connector (0.8mm pitch)

H=4.0mm



H=5.2mm



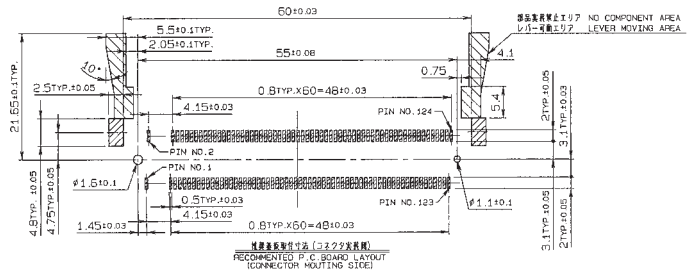
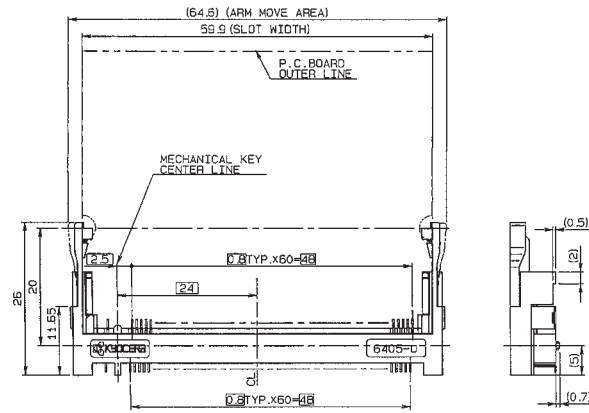
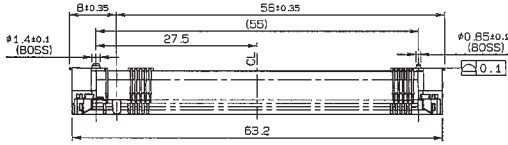
0.8mm Pitch

SERIES

6405

ミニPCI タイプⅢ コネクタ (0.8mmピッチ)
Mini PCI Type III connector (0.8mm-pitch)

H=7.95mm



推奨カード寸法

