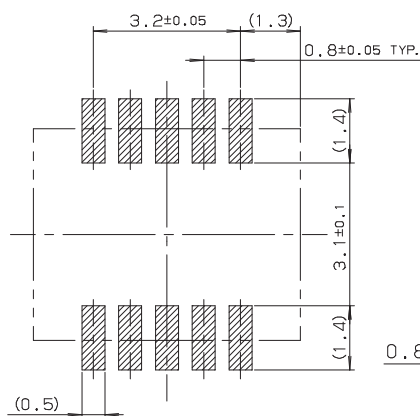
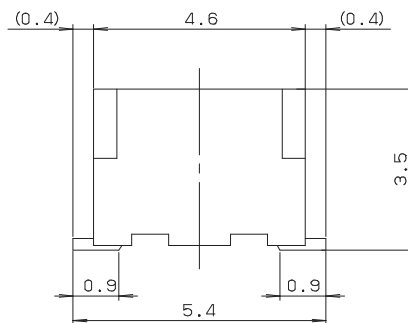
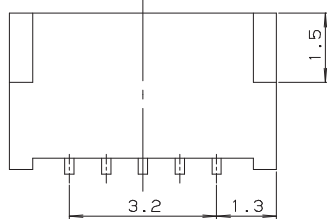
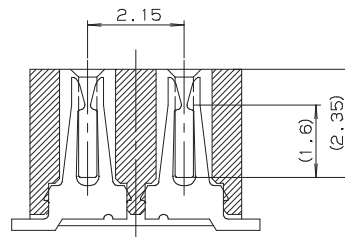
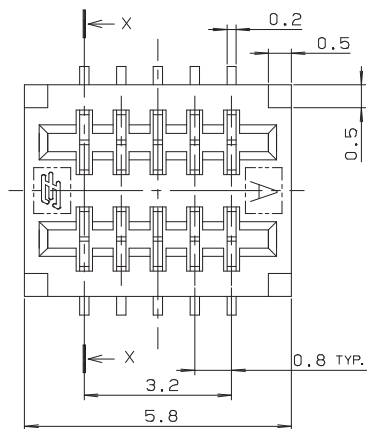


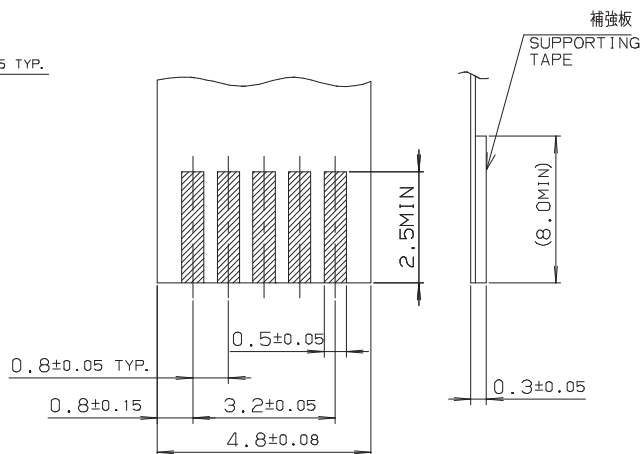
0.8mm Pitch  
SERIES

# 6218

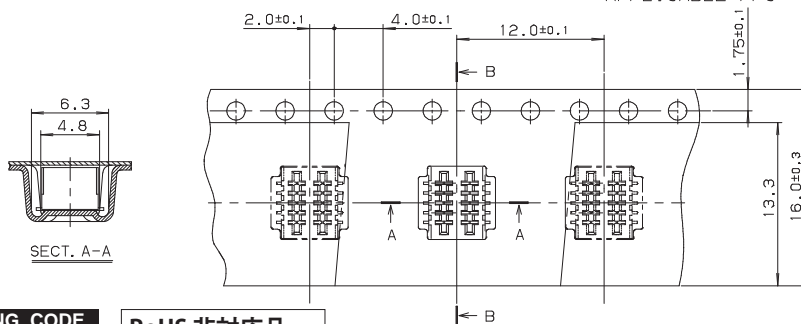
0.8mmピッチ NON-ZIF ストレート SMT 両面接点  
0.8mmPitch LIF Vertical SMT Dual-sided contact



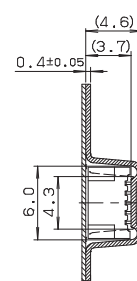
基板取付寸法  
MOUNTING LAYOUT



適合FPC  
APPLICABLE FPC



SECT. A-A



SECT. B-B

注文コード ORDERING CODE  
04 6218 010 000 800

RoHS 非対応品  
RoHS not Compliance

スズ鉛めっき Sn-Pb Plated  
極数 NUMBER OF POSITIONS

梱包数量 1500個/リール  
PACKING QUANTITY 1500/Reel