

MULTI LINE MODULE CONNECTORS

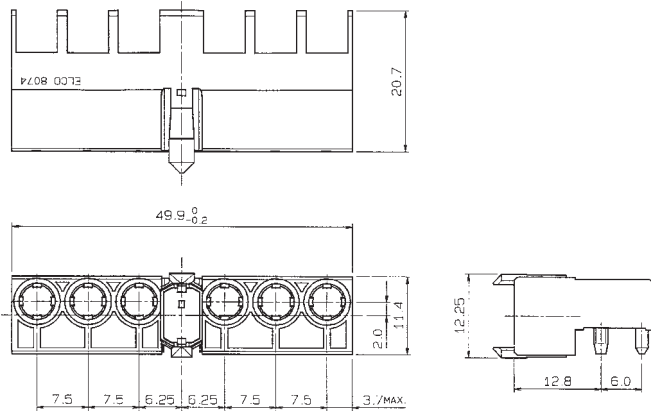
SERIES

8074/8075

リセ TYPE L, M, N
Receptacle

■ SERIES 8074

TYPE L



注文コード Ordering Code

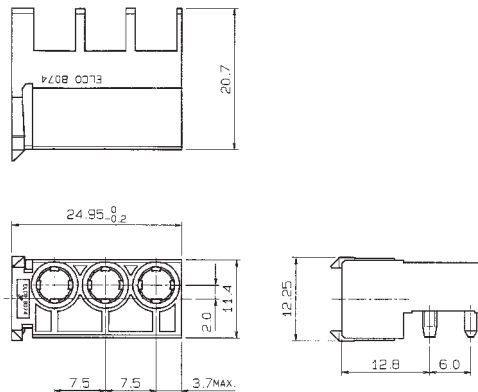
62 8074 006 X11 007

VARIATION

- 0 : ボス付 (with boss)
- 1 : ボス無 (without boss)

■ SERIES 8074

TYPE N



注文コード Ordering Code

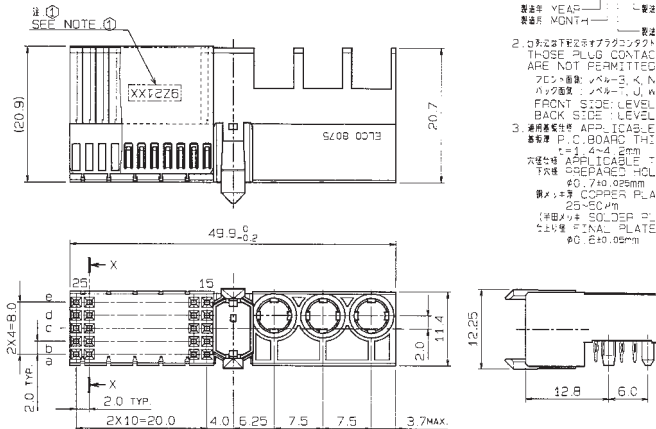
62 8074 003 XXX 007

VARIATION

- 011 : ストレートボラキー有り ボス付 (ST with P.K. with boss)
- 111 : ストレートボラキー有り ボス無 (ST with P.K. without boss)

■ SERIES 8075

TYPE M



注 意 NOTE

- ① 製造ロット番号 LOT. NO. 9221XX
- 製造年 YEAR 11 製造ライン LINE CODE
- 製造月 MONTH 11
- 製造日 DATE
- 2. ②は28P28S179P28K28J28H28M28L28N28T28U28V28W28X28Y28Z28AA28AB28AC28AD28AE28AF28AG28AH28AJ28AK28AL28AM28AN28AO28AP28AQ28AR28AS28AT28AU28AV28AW28AX28AY28AZ28BA28BB28BC28BD28BE28BF28BG28BH28BJ28BK28BL28BM28BN28BO28BP28BQ28BR28BS28BT28BU28BV28BW28BX28BY28BZ28CA28CB28CC28CD28CE28CF28CG28CH28CJ28CK28CL28CM28CN28CO28CP28CQ28CR28CS28CT28CU28CV28CW28CX28CY28CZ28DA28DB28DC28DD28DE28DF28DG28DH28DJ28DK28DL28DM28DN28DO28DP28DQ28DR28DS28DT28DU28DV28DW28DX28DY28DZ28EA28EB28EC28ED28EE28EF28EG28EH28EJ28EK28EL28EM28EN28EO28EP28EQ28ER28ES28ET28EU28EV28EW28EX28EY28EZ28FA28FB28FC28FD28FE28FF28FG28FH28FJ28FK28FL28FM28FN28FO28FP28FQ28FR28FS28FT28FU28FV28FW28FX28FY28FZ28GA28GB28GC28GD28GE28GF28GG28GH28GJ28GK28GL28GM28GN28GO28GP28GQ28GR28GS28GT28GU28GV28GW28GX28GY28GZ28HA28HB28HC28HD28HE28HF28HG28HJ28HK28HL28HM28HN28HO28HP28HQ28HR28HS28HT28HU28HV28HW28HX28HY28HZ28IA28IB28IC28ID28IE28IF28IG28IH28IJ28IK28IL28IM28IN28IO28IP28IQ28IR28IS28IT28IU28IV28IW28IX28IY28IZ28JA28JB28JC28JD28JE28JF28JG28JH28JJ28JK28JL28JM28JN28JO28JP28JQ28JR28JS28JT28JU28JV28JW28JX28JY28JZ28KA28KB28KC28KD28KE28KF28KG28KH28KJ28KK28KL28KM28KN28KO28KP28KQ28KR28KS28KT28KU28KV28KW28KX28KY28KZ28LA28LB28LC28LD28LE28LF28LG28LH28LJ28LK28LL28LM28LN28LO28LP28LQ28LR28LS28LT28LU28LV28LW28LX28LY28LZ28MA28MB28MC28MD28ME28MF28MG28MH28MJ28MK28ML28MM28MN28MO28MP28MQ28MR28MS28MT28MU28MV28MW28MX28MY28MZ28NA28NB28NC28ND28NE28NF28NG28NH28NJ28NK28NL28NM28NN28NO28NP28NQ28NR28NS28NT28NU28NV28NW28NX28NY28NZ28OA28OB28OC28OD28OE28OF28OG28OH28OJ28OK28OL28OM28ON28OO28OP28OQ28OR28OS28OT28OU28OV28OW28OX28OY28OZ28PA28PB28PC28PD28PE28PF28PG28PH28PJ28PK28PL28PM28PN28PO28PP28PQ28PR28PS28PT28PU28PV28PW28PX28PY28PZ28QA28QB28QC28QD28QE28QF28QG28QH28QJ28QK28QL28QM28QN28QO28QP28QQ28QR28QS28QT28QU28QV28QW28QX28QY28QZ28RA28RB28RC28RD28RE28RF28RG28RH28RJ28RK28RL28RM28RN28RO28RP28RQ28RR28RS28RT28RU28RV28RW28RX28RY28RZ28SA28SB28SC28SD28SE28SF28SG28SH28SJ28SK28SL28SM28SN28SO28SP28SQ28SR28SS28ST28SU28SV28SW28SX28SY28SZ28TA28TB28TC28TD28TE28TF28TG28TH28TJ28TK28TL28TM28TN28TO28TP28TQ28TR28TS28TT28TU28TV28TW28TX28TY28TZ28UA28UB28UC28UD28UE28UF28UG28UH28UJ28UK28UL28UM28UN28UO28UP28UQ28UR28US28UT28UU28UV28UW28UX28UY28UZ28VA28VB28VC28VD28VE28VF28VG28VH28VJ28VK28VL28VM28VN28VO28VP28VQ28VR28VS28VT28VU28VV28VW28VX28VY28VZ28WA28WB28WC28WD28WE28WF28WG28WH28WJ28WK28WL28WM28WN28WO28WP28WQ28WR28WS28WT28WU28WV28WW28WX28WY28WZ28XA28XB28XC28XD28XE28XF28XG28XH28XJ28XK28XL28XM28XN28XO28XP28XQ28XR28XS28XT28XU28XV28XW28XX28XY28XZ28YA28YB28YC28YD28YE28YF28YG28YH28YJ28YK28YL28YM28YN28YO28YP28YQ28YR28YS28YT28YU28YV28YW28YX28YY28YZ28ZA28ZB28ZC28ZD28ZE28ZF28ZG28ZH28ZJ28ZK28ZL28ZM28ZN28ZO28ZP28ZQ28ZR28ZS28ZT28ZU28ZV28ZW28ZX28ZY28ZZ
- 3. 適用規格等 APPLICABLE P.C. BOARD 基板厚 P.C. BOARD THICKNESS: ±0.14±0.05mm 穴径等 APPLICABLE T/H 穴開き HOLE DIA.: #0.74±0.05mm 銅めっき COPPER PLATING THICKNESS: 25±50μm (※※※ SOLDER PLATING: 4~10μm) ※※※ PIN PLATED HOLE DIA.: #0.81±0.05mm

注文コード Ordering Code

27 8075 355 01X XXX

VARIATION

- 1 : ボス付シールド付 (with boss, with shield)
- 2 : ボス無シールド付 (without boss, with shield)

FINISH CODE

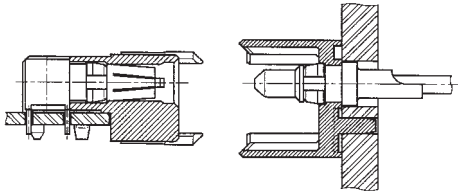
- 862 : Au0.1μm
- 840 : Au0.38μm
- 863 : Au0.76μm
- 833 : Pd/Ni0.65

MULTI LINE MODULE CONNECTORS

SERIES

8489/8074

高電流用コンタクト High Power Contact



タイプL、M、Nコネクタに使用する高電流用コンタクトです。
Power pin and socket contacts for type L, M and N module.

Technical Specification

使用温度範囲 (Operating temperature) : -55°C to +125°C
挿入力 (Insertion force) : 10N max./contact pair
保持力 (Retention force) : 1.6N min./contact pair

Variation	Termination	ϕA	Performance	Ordering Code	
	P.C.	Contact	40A max	60 8489 050 009 049	
	SOLDER	4.80mm	40A max	60 8489 050 001 049	
	SOLDER	3.50mm	30A max	60 8489 050 002 049	
	SOLDER	2.80mm	20A max	60 8489 050 003 049	
	SOLDER	1.70mm	10A max	60 8489 050 004 049	
	SOLDER	4.80mm	40A max	60 8489 040 001 049	
	SOLDER	3.50mm	30A max	60 8489 040 002 049	
	SOLDER	2.80mm	20A max	60 8489 040 003 049	
	SOLDER	1.70mm	10A max	60 8489 040 004 049	
	SOLDER	4.80mm	40A max	Not available now.	
	SOLDER	3.50mm	30A max		
	SOLDER	2.80mm	20A max		
	SOLDER	1.70mm	10A max		
	P.C.	Contact	40A max	Not available now.	
		SOLDER	4.80mm	40A max	Not available now.
		SOLDER	3.50mm	30A max	
		SOLDER	2.80mm	20A max	
SOLDER		1.70mm	10A max		
	SOLDER	4.80mm	40A max	Not available now.	
	SOLDER	3.50mm	30A max		
	SOLDER	2.80mm	20A max		
	SOLDER	1.70mm	10A max		
	SOLDER	4.80mm	40A max	Not available now.	
	SOLDER	3.50mm	30A max		
	SOLDER	2.80mm	20A max		
	SOLDER	1.70mm	10A max		

ϕA ; inner diameter of contact sleeve

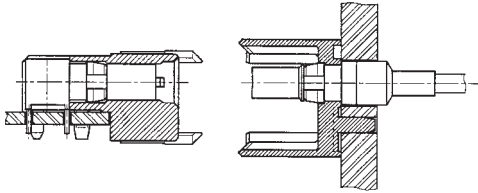
MULTI LINE MODULE CONNECTORS

SERIES

8489

同軸用コネクタ

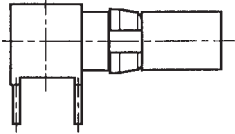
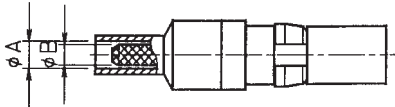
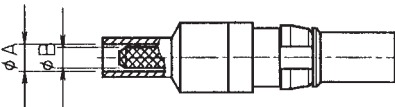
Coax Plug/Receptacle Contact



タイプL、M、Nコネクタに使用する同軸用コネクタです。
50Ω coaxial contacts for type L, M and N module.

Technical Specification

特性インピーダンス (Characteristic impedance) : 50Ω
 使用温度範囲 (Operating temperature) : -55℃ to +125℃
 使用周波数 (Operating frequency) : 2 GHz Max.
 挿入力 (Insertion force) : 10N max./contact pair
 保持力 (Retention force) : 0.9N min./contact pair

Variation	Termination		φA	φB	Ordering Code
	Outer Conductor	Inner Conductor			
			Contact	Contact	Not available now.
	CRIMP	SOLDER	2.25mm	1.70mm	60 8489 020 001 049
	CRIMP	SOLDER	3.20mm	2.70mm	60 8489 020 002 049
	CRIMP	SOLDER	3.58mm	2.70mm	60 8489 020 003 049
	CRIMP	SOLDER	3.55mm	2.70mm	60 8489 030 001 049
	CRIMP	SOLDER	3.20mm	2.70mm	60 8489 030 002 049
	CRIMP	SOLDER	2.25mm	1.70mm	60 8489 030 003 049

φA; inner diameter of contact sleeve